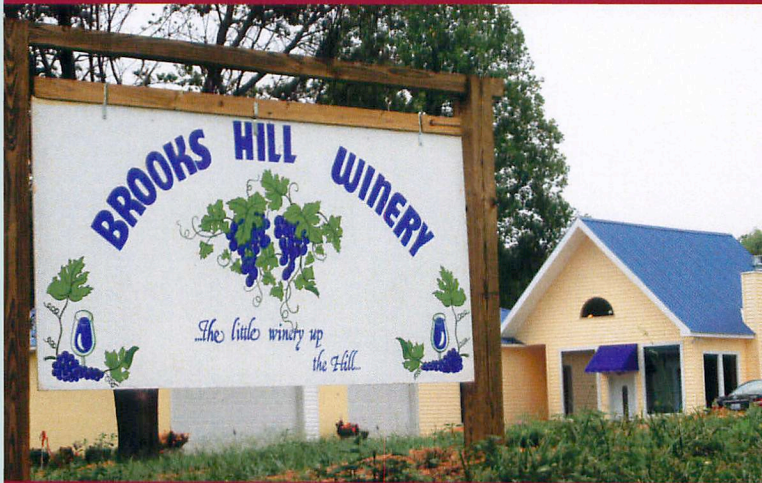
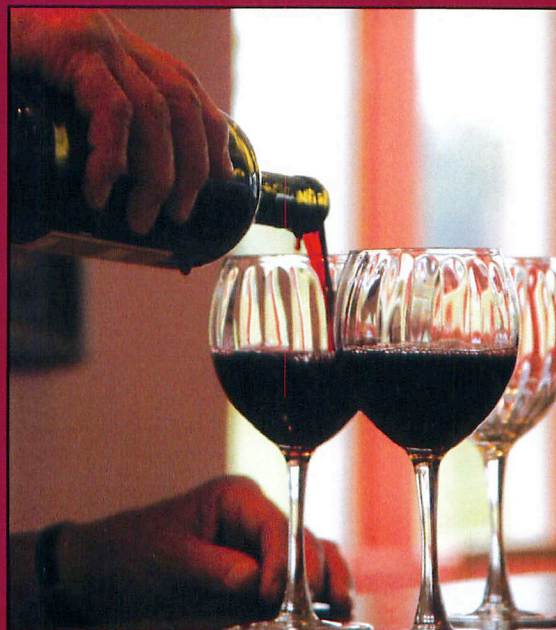
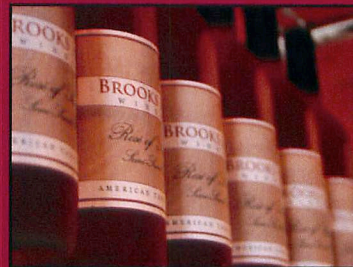


BROOKS HILL WINERY



Mike and Karen Hatzell and Lili invite you to Brooks Hill Winery located atop Brooks Hill approximately 5 miles south of Louisville Metro. From I-65, Exit 121, take Highway 1526 West, 2 miles. Brooks Hill Winery is on the right and easily identifiable by its distinctive blue roof.



BROOKS HILL WINERY

It is the sincere hope of the owners and employees that our customers enjoy the Brooks Hill experience. Please feel free to bring picnic baskets or select from our fine cheeses and seasonal fruits available in our tasting room.



<i>Louisville</i>		
I-265		
		N ↑
	Brooks Road Hwy. 1526	I-65 Exit 121
← 2 Miles		
<i>Shepherdsville</i>		

BROOKS HILL WINE

Available by the glass, bottle or case

DRY WINES

Cabernet Sauvignon
Coral Ridge Red
Morning Sky

SEMI-SWEET WINES

Rosé of Sharon
Hill Breeze
Radiance

SWEET WINES

Whispering Wind

(502) 957-7810